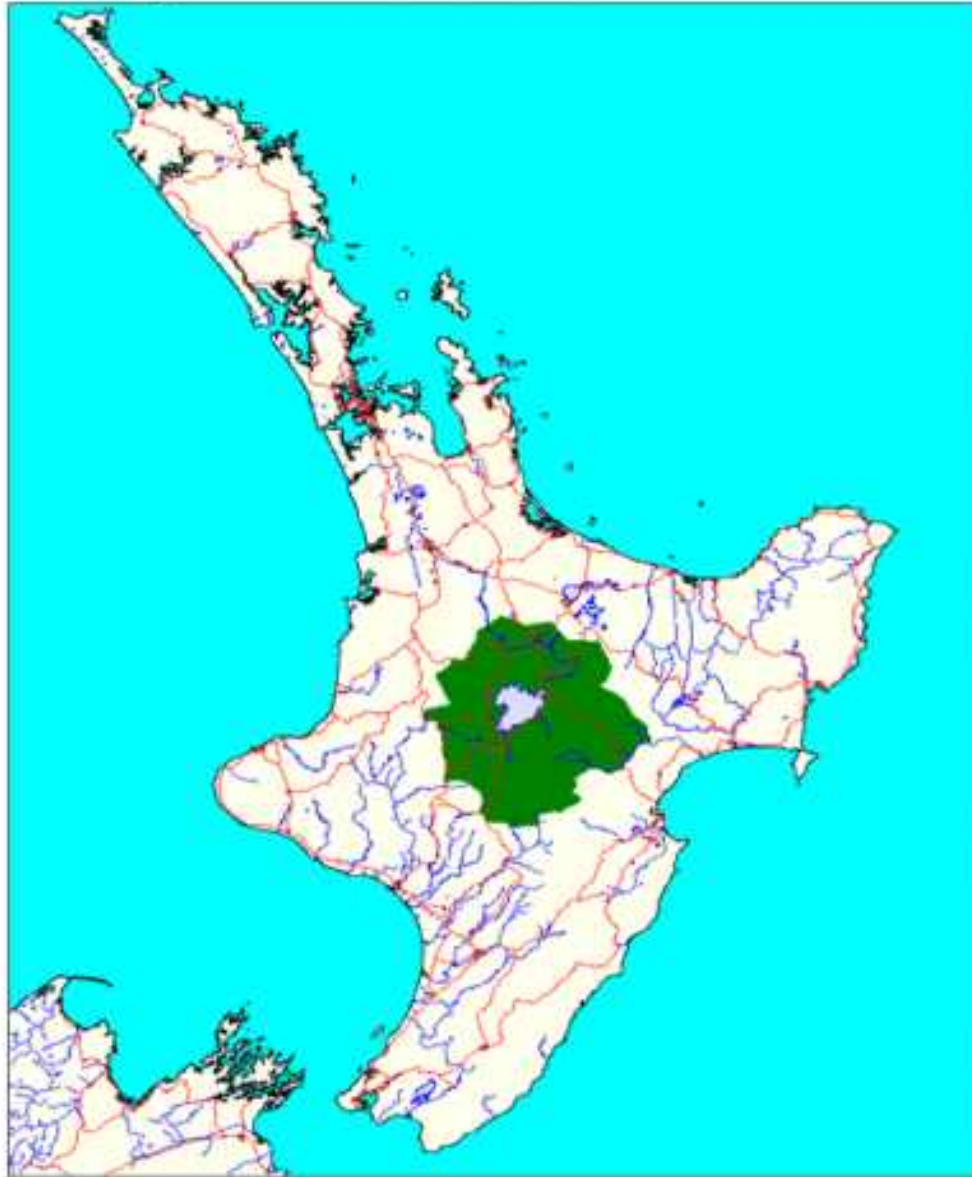




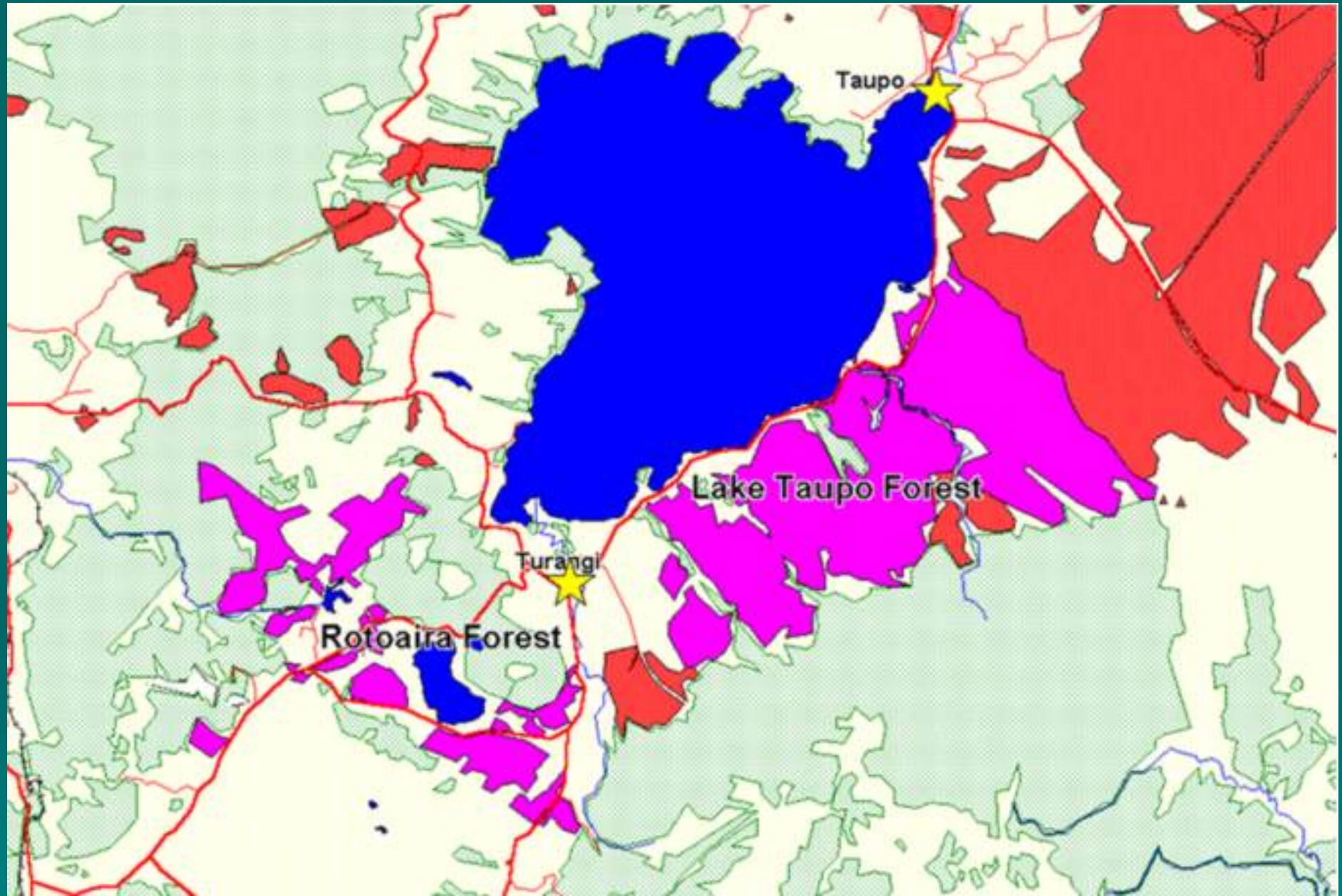
Kia ora koutou katoa

GREETINGS!

Ngati Tuwharetoa Rohe



**North Island
New Zealand**



Basis for Establishment of Tribal Plantation Forests

- Land-owner decision to ensure consistency with Maori concept of holistic sustainable management of the regional ecosystem
 - Plantation forests preferred over pastoral farming & other uses
 - Intention to maintain plantations for many generations to come
 - Kaitiakitanga – Traditional system of holistic management
 - Protect quality of the fresh water streams, lakes, fishery and natural resources

Implementation

- Implementation of environmental measures exceeded all statutory requirements at that time (mid-1960's) and continue to do so
- Commercial imperatives for world class forest maintained subject to satisfying cultural imperatives
- The 15,000 owners of the 130 land blocks involved agreed work collectively to maintain sustainability through sharing across the estate:
 - the overall environmental sacrifices; and
 - the commercial benefits.
- Owners agreed to wait 30 years for financial return

FSC Issues for Maori Forest Owners

- Incompatibility with Maori concept of sustainability
 - holistic vs specific
- Historical circumstances not accommodated
 - Impact / relevance of title, historical, financial factors
- Direct conflict between FSC requirements and Indigenous land rights and values
 - P2 & P3 vs P6, P10
 - Authority to control remaining land estates FOR future social, cultural & economic benefits

NZ Response & Actions Recommended

- Maori 4th Chamber established on the basis of:
 - Historical land alienation
 - Treaty rights
- Treaty audit of P2 & P3
- Consultation continues
 - Need to understand impact on indigenous peoples
 - Global collaboration?

THANK YOU!

